

Giselle Remy-Bryan, LCSW, M.Div, Social Worker



Giselle spent her formative years as an Army brat and is the spouse of an Army veteran. She personally knows the challenges that veterans and their families face. She received her Master of Social Work from Rutgers University, with a concentration in health, mental health and aging. Giselle has served veterans for several years in multiple health care settings. She is passionate about connecting veterans with care through case management and family services.

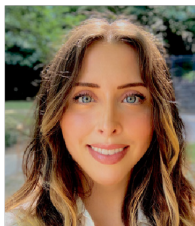
Tiffany Wilcox, LCSW, Social Worker



Tiffany received her Bachelor of Science and Master of Science in Social Work at Florida State University. She grew up in a military family and town which is what fostered her passion for working with veterans. Tiffany completed her internships at Georgia Regional Hospital of Atlanta and at the Atlanta VA Medical Center in the Geriatric Clinic. She has also worked in home health, the Atlanta VA Homeless Program and Home Hospice. Tiffany is currently pursuing her LCSW.

Research and Data

Celia Allred, BS, Research Specialist



Celia graduated with honors from Oregon State University with her Bachelor of Science in Psychology. Before coming to EHVP, she honed her research skills through a National Institute on Drug Abuse internship with the University of Texas Health Science Center at San Antonio, where she assisted with research on the impacts of substance use disorder in parents on their offspring. An Air Force veteran herself, Celia is passionate about her role as a research specialist supporting EHVP's work in developing therapeutic techniques to treat PTSD and other invisible wounds through measure dissemination, participant screening, biological sample collection and processing, research interviewing, and device administration.

Kathryn Black, Research Data/Senior Informatics Specialist



Kathryn has a background in clinical and translational research in psychiatry. As the data analyst, she is responsible for timely and accurate data collection and reporting to support patient care and strategic decision making. Kathryn earned her Bachelor of Science in Psychology and a Master of Science in Public Health from Emory University.

Meagan Dove, BS, Clinical Research Coordinator I



Meagan obtained a Bachelor of Science in Public Health at Stetson University in Florida. As a research interviewer, Meagan is involved in a variety of tasks such as the administration of surveys, collection of biological samples and the input of psychophysiological data.

Luke Ellmaker, BA, Research Interviewer



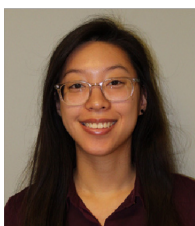
Luke received his Bachelor of Arts in Psychology from North Carolina State University. Before being a part of EHVP, Luke performed research with the Department of Psychology in the North Carolina State University Mindset Lab. In the lab, Luke worked as a research assistant and helped process and develop research about Trauma-Informed Courtrooms. Luke now works at EHVP as a research interviewer.

Syreese Fuller, BS, Lead Clinical Research Coordinator



Syreese Fuller is responsible for the management, coordination and regulatory compliance of research projects. Syreese earned her Bachelor of Science in Biology from Tuskegee University. She has a keen interest in health-related research with over six years of experience in clinical and behavioral research at various institutions such as Emory University Hospital Midtown and Grady Memorial Hospital.

Amy Kim, BS, Project Coordinator



Amy graduated Emory University with a Bachelor of Science in Quantitative Sciences. She returned to Emory as a research interviewer which involves administering surveys, obtaining biological samples and input of psychophysiological data, among other tasks.